



# MODULAR HEALTHCARE FACILITIES

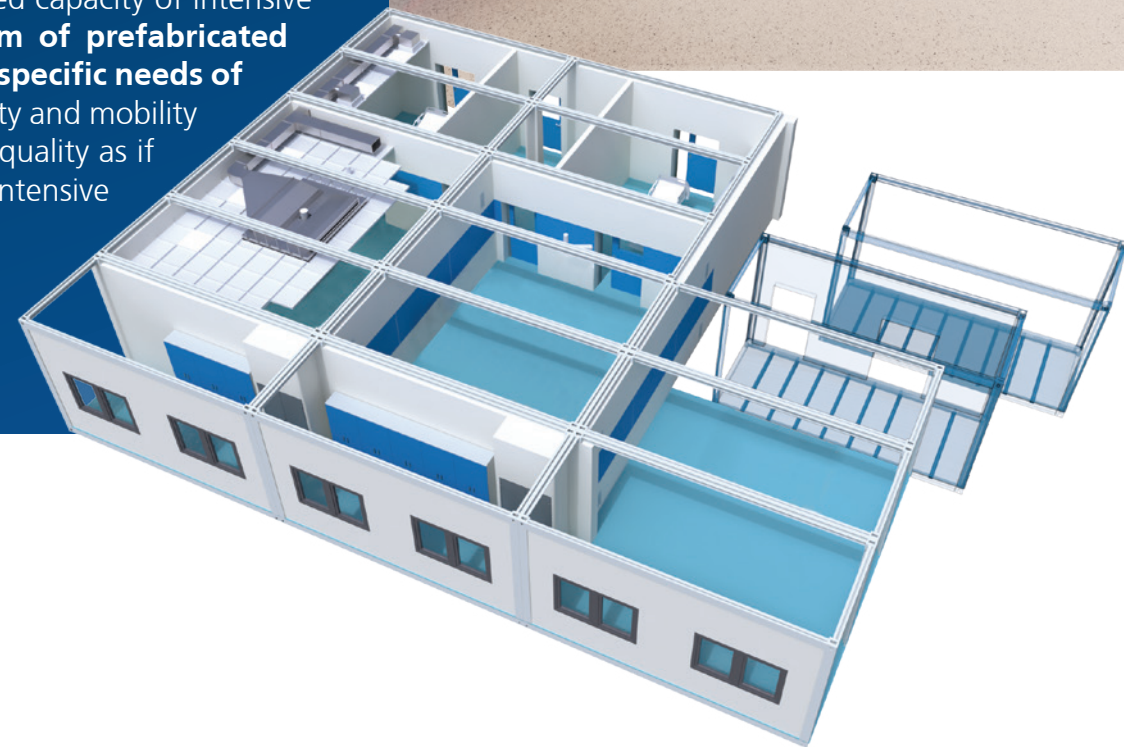
MOBILE CRITICAL CARE UNIT WITH 20 BEDS  
MOBILE UNIT WITH 32 BEDS FOR STABILIZED PATIENTS  
MOBILE OPERATING THEATRES  
MODULAR HOSPITAL WITH 50 TO 200 BEDS

# MODULAR MOBILE HEALTHCARE FACILITIES

MOBILE CRITICAL CARE UNIT WITH 20 BEDS

MOBILE UNIT WITH 32 BEDS FOR STABILIZED PATIENTS

Solution of modular mobile healthcare facilities BLOCK® developed together with our partner CONTIMADE s.r.o. Solution for increasing the bed capacity of intensive care units and inpatient departments consists of **a system of prefabricated modules which we design and deliver according to the specific needs of the client.** The main advantage of the solution is the flexibility and mobility of the system and the provision of patient care in the same quality as if the patient were in a common environment of hospital of intensive care unit.



We provide for basic solution that can be combined in various ways:

## CCU20+

**Mobile Critical Care Unit** fully equipped with medical technology for critical patients (20bed standard).

## CCU20

**Mobile Critical Care Units** with or without equipment for critical patients (20bed standard) - the equipment can be provided by the Client or Contractor, eventually lowering the ICU standard (eg ICU without pulmonary ventilators and ECMO, or with reduced quantity).

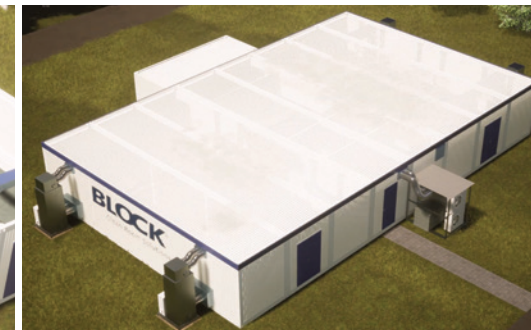
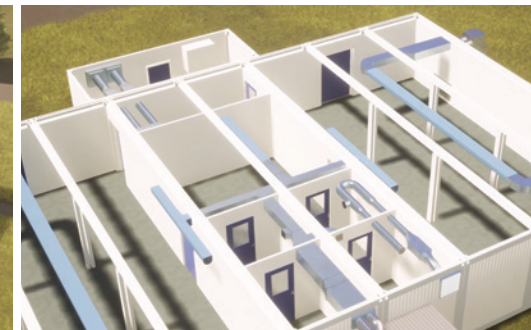
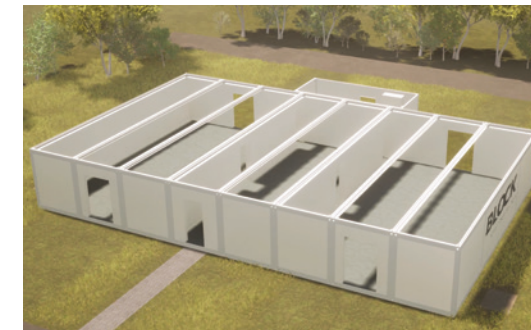
## USP32

**Mobile Unit for Stabilized Patients** (32bed modules focused on stabilized patients with COVID-19 or another disease) – USP32 has the necessary medical gas distribution, patient monitoring, nurse-patient call communication system and all necessary equipment and technologies.

## USP32 - OPTION

The offer also includes OPTION, where we offer adjusting of one room into an „intensive care room“, ie 28 beds standard + 2 beds with intensive care of the patient (from a 4-bed room to a double room with higher intensity of care).

## Construction Process:





# CCU20+ | CCU20

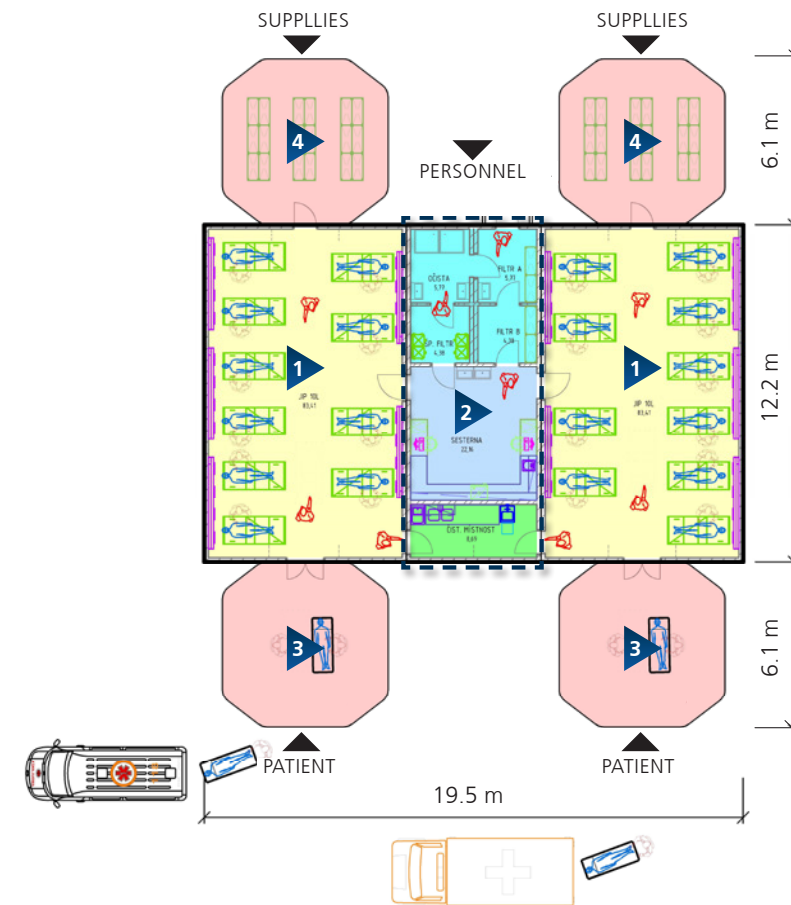
## MOBILE CRITICAL CARE UNIT WITH 20 BEDS

The mobile critical care unit with 20 beds is intended for critical situations with a need to solve expanding of the existing CCU of the given hospital. The CCU is suitable for infectious patients with the same diagnosis.

■ **Fully functional (24/7) and fully equipped medical department.**

■ **The unit consists of:**  
**two 10-bed wards, nurses' room, decontamination, filters and store rooms.**

■ **The CCU has following dimensions after assembly:**  
**19.5 x 12.2 m (together with attached tents: 19.5 x 24.4 m).**  
**It is an assembly of 8 fully equipped containers + 4 tents + 2 technological containers.**



- 1 CRITICAL CARE UNIT
- 2 AUXILIARY ROOMS
  - STAFF DECONTAMINATION
  - A FILTER
  - B FILTER
  - SPECIAL FILTER
  - NURSES' ROOM
  - MATERIAL DECONTAMINATION
- 3 TENT FOR PATIENT ADMISSION \*
- 4 STORE TENT \*

\* TENTS CAN BE REPLACED BY A MODULAR SOLUTION

- Focus – CCU focused on patients with pulmonary or infectious diseases (COVID-19) , later can be converted to a standard ICU/CCU
- Capacity – 20 beds for intensive/critical care
- Complete medical technology including pulmonary ventilators, ECMO, electric beds or bed monitors
- Modular built-in clean rooms consisting of the metal sandwich panels and doors
- Medical gases – distribution of oxygen and pressure air to bed head units
- Technological containers – sources of medical gases and an electric container
- Heavy current – contains a medical isolated system, a diesel generator, an UPS, electric wiring for less important circuits, important circuits and very important circuits
- Light current – for patient monitoring, structured cabling within the CCU20+ also for connection to the hospital network (HIS)
- Air conditioning – negative air pressure A/C system, with HEPA filters, temperature stability in the CCU, air distribution through sterilizable cloth outlets and humidity stability
- Decontamination possibility – the whole CCU can be decontaminated (fumigated) with vaporized hydrogen peroxide (VHP). This fumigation can be ensured by a delivery of our VHP generator or provided by us as a periodical service
- CCU20+ is designed in accordance with the EU standards and codes, and after the provision of destination, the project documentation of CCU20+ is adjusted to the local standards, climate, conditions etc.
- The personnel entry is equipped with an airlock system which enables personnel decontamination when leaving the CCU



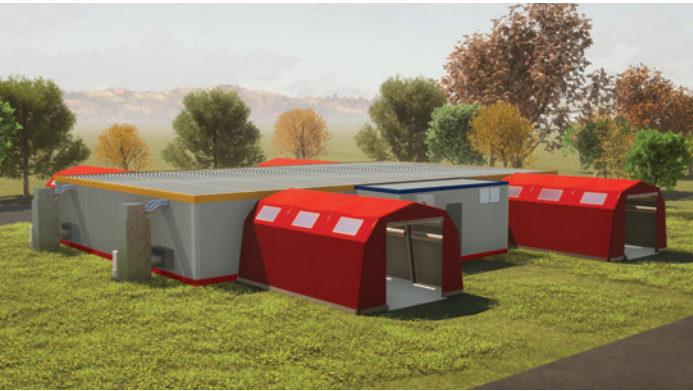
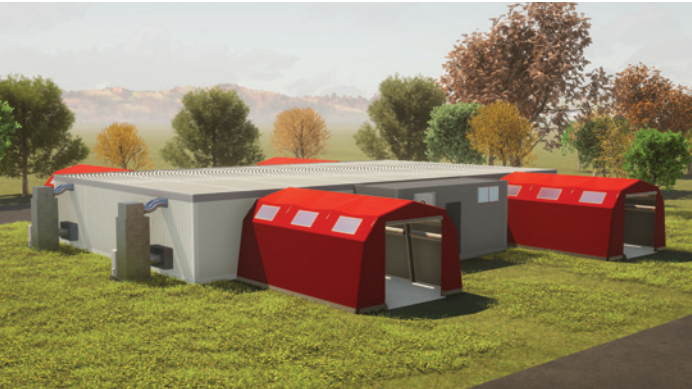


## CCU LOCATION

The CCU is installed on the hospital area on a parking site or other suitable area and attached to water, waste-water and electric networks.

## CCU COLOUR SOLUTIONS

Example of a colour solution. Upon agreement, it is possible to prepare other color solutions or replace the tents by the modules, as well.

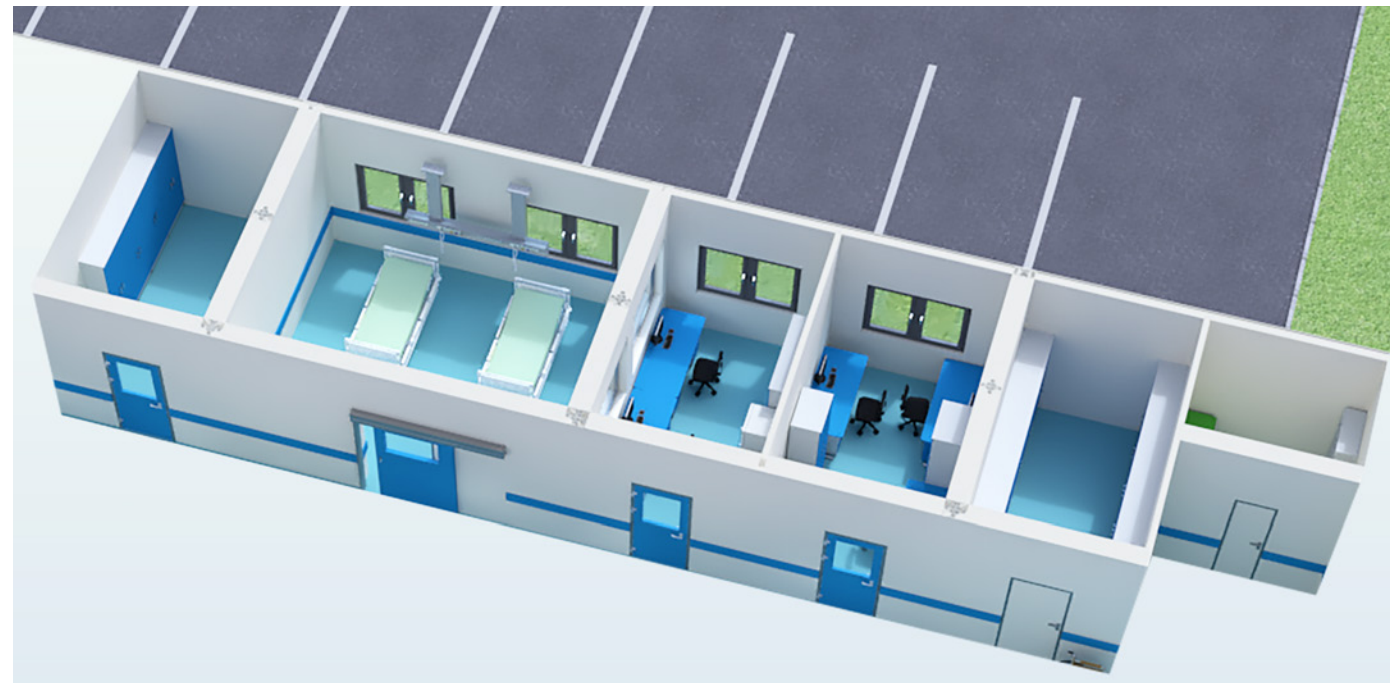
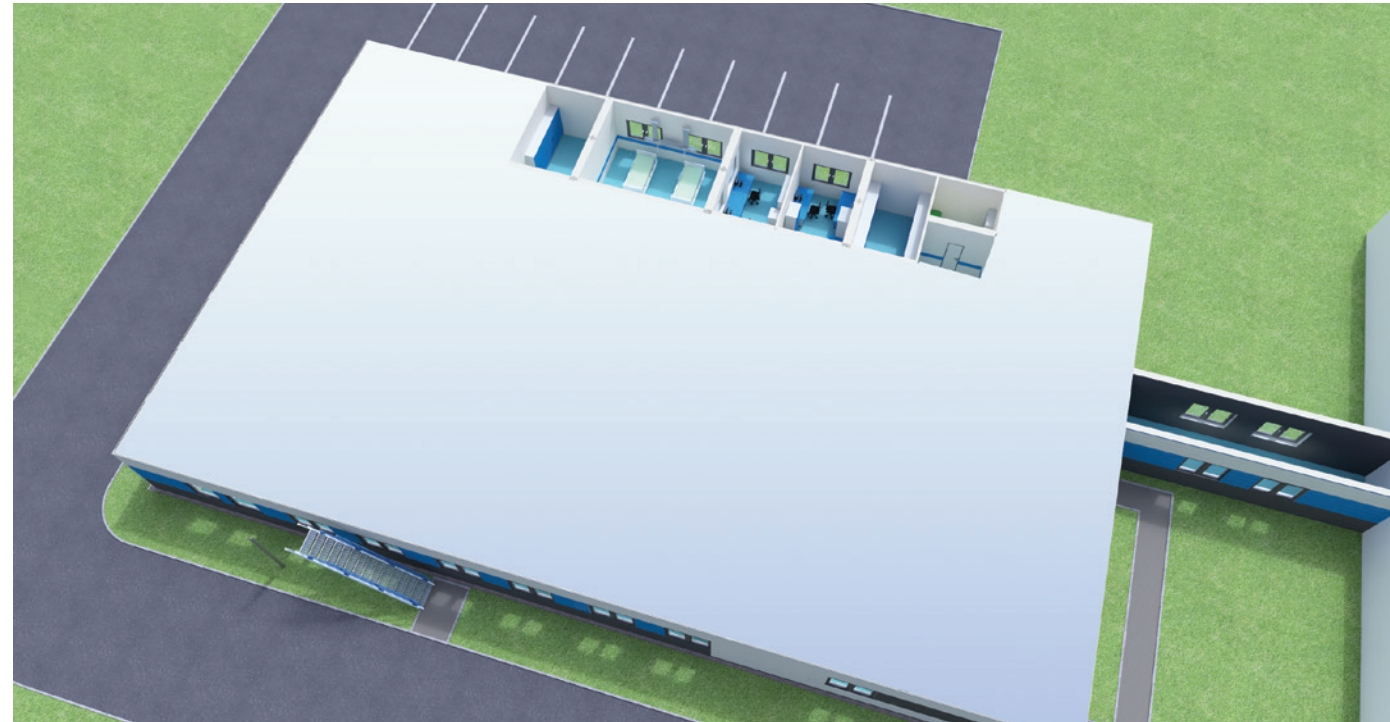




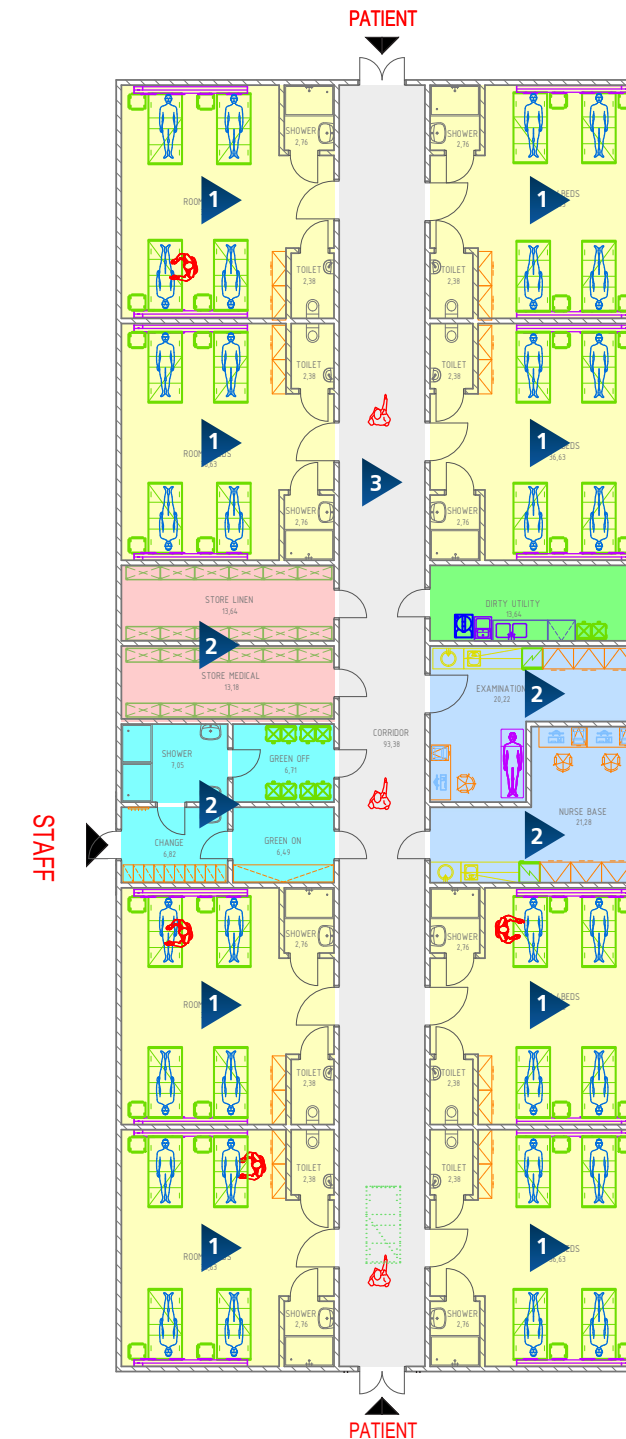
# USP32

## MOBILE UNIT FOR STABILIZED PATIENTS WITH 32 BEDS

As an extension of our solution of mobile CCU of 20 beds for infectious patients or as an individual facility, we would like to offer you the delivery and installation of a 32bed mobile inpatient unit for stabilized patients diagnosed with COVID-19 or different type of disease (USP32). The USP32 is a simple modular solution together with medical technology. The principle is mainly to expand the capacity of medical facilities by supplying facility with basic patient care. There is distributed the medical air (O<sub>2</sub>) and wired the nurse call system to each bed.



- 1 CRITICAL CARE UNIT
- 2 AUXILIARY ROOMS
  - DIRTY UTILITY
  - EXAMINATION
  - NURSE BASE
  - STORE LINEN
  - STORE MEDICAL
  - GREEN OFF
  - GREEN ON
  - SHOWER
  - CHANGE
- 3 CORRIDOR



# USP32 – OPTION

## MOBILE UNIT FOR STABILIZED PATIENTS WITH 32 BEDS – OPTION

The offer also includes OPTION, where we offer **adjusting of one room into an „intensive care room“, ie 28 beds standard + 2 beds with intensive care of the patient (from a 4-bed room to a double room with higher intensity of care).**

- Here, the patient can also be connected to a pulmonary ventilator which are as an option of the offer.
- This is an option for customers who would not order our mobile ICU of 20 beds but would like to have at least a higher standard of a patient care.
- Cheaper solution than CCU20+.
- The whole facility can therefore be realized together with mobile critical care units with 20 beds or can be realized separately. Similarly, it is possible to realize several units of these 32-bed units.

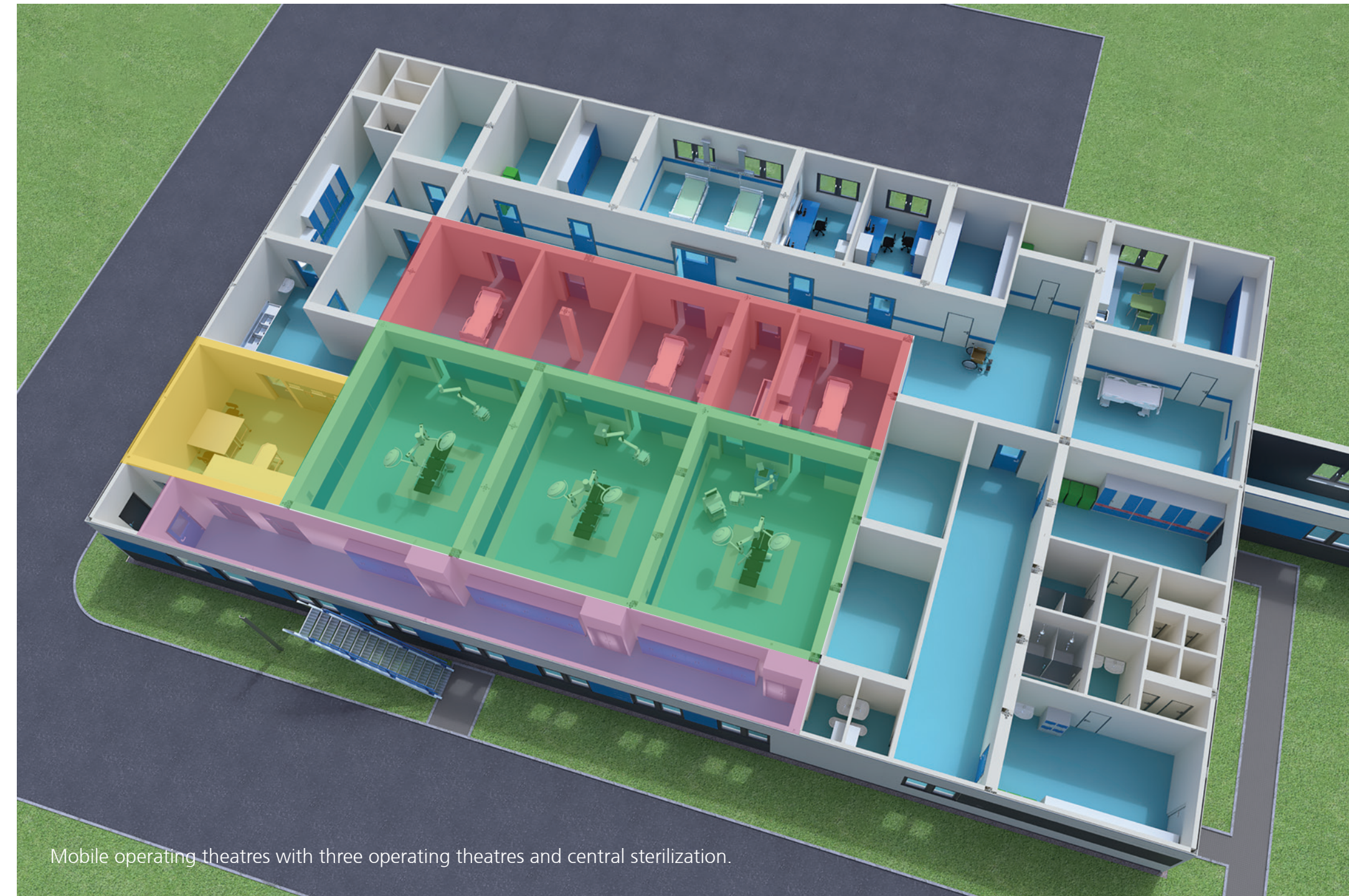
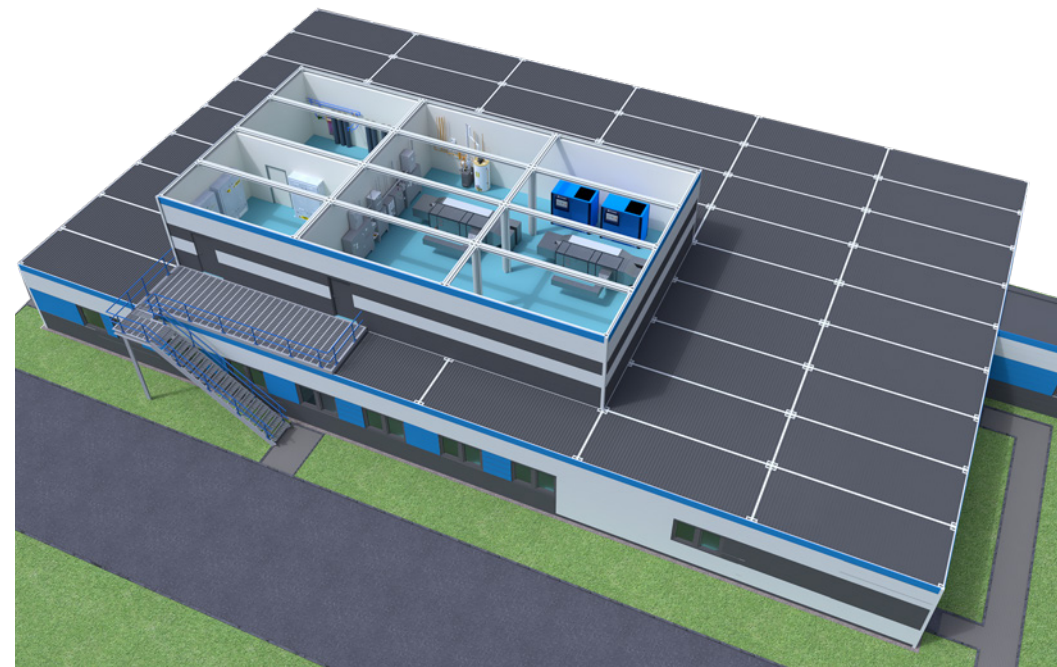


# MOBILE OPERATING THEATRES

This modular building is a great solution for a planned medium and long-term renovations of operating theaters or central sterilization, as well as for a possible increase in the capacity of the medical facility. In hospitals, it is often necessary to maintain full surgery operation even during the reconstruction of existing operating theaters. The offered modular unit of operating theaters with the possibility of connecting a central sterilization unit could be used for this purpose.

## Extent of the Clean Rooms

- Operating Theatres
- Preparation and Scrub Area
- Control and Packing Area
- Sterile Corridor



Mobile operating theatres with three operating theatres and central sterilization.

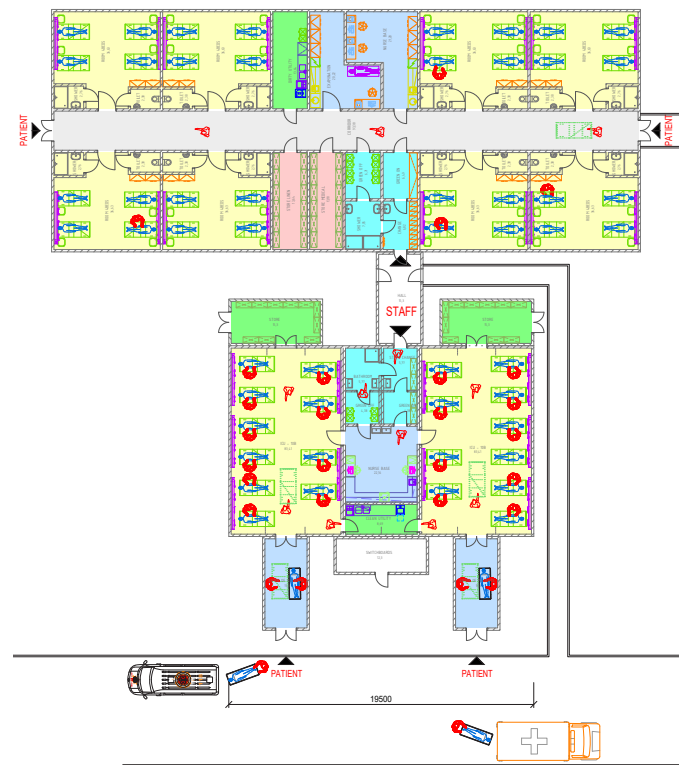


# STATIONARY MODULAR FACILITIES

## VARIOUS WAYS TO MEET CLIENT REQUIREMENTS

Modules can be combined in various ways to meet client requirements. The precise focus and layout of the individual requirements would be part of the consultation with the client. For example, we can offer **USP32 together with CCU20+ (or CCU20)** as an extension of your hospital.

For example, a fully functional hospital (with the necessary facilities) of 110 beds can be built from prefabricated hospital. By default, this hospital is focused on general medicine, but its layout allows a simple change of the focus on patients with infectious diseases, type COVID-19. The capacity of the hospital can vary from 50 to 200 beds.



Example of a solution of the whole modular hospital



# REFERENCES

NEW MODERN BORAM GENERAL HOSPITAL, PAPUA NEW GUINEA

Supply of 2 mobile modular operating theatres, CSSD, laboratory and blood sampling, including the medical technologies, medical gases or back-up sources (UPS and diesel-agregates).







[www.blockhts.cz](http://www.blockhts.cz)